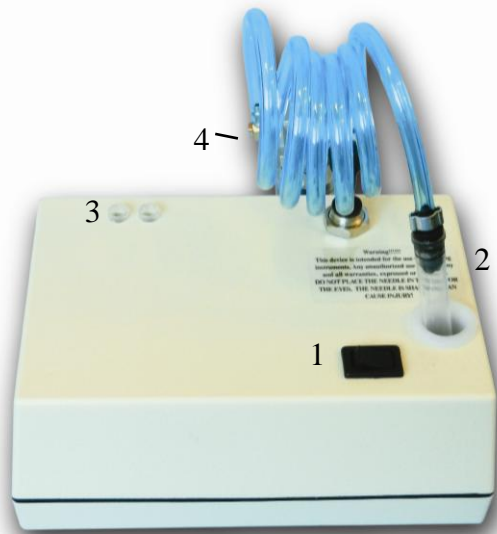


jodi[®] Pro Plus



1. Vacuum On/Off Switch
2. Removable Vacuum Tube
3. Inserts for Needles
4. Filtered Liquid Trap

Normal Operation

Vacuum

1. Turn on switch 1, work needle up and down the sides of the sound bore, going till you bottom out .If this was not satisfactory, use Ammonia to break down ear wax/oil and then vacuum, repeating as necessary. This unit is meant to be compatible with liquids if you should opt to use them. The clear tube is easily removed for cleaning, disinfecting or sterilizing. When the needle gets clogged you will hear a tonal change in the vacuum pump, the same noise can be simulated by positioning your finger on and off the needle end.

Take a second and read the *Hearing Aid Tech. Notes*

1. Our pink needle is specifically designed for maximum vacuum efficiency in CIC's, ITC, ITE, and RIC sound bores. The Light Blue needle is sized for open ear Thin Tubes. Our Black needle is oversized for Ear Molds.

Changing this needle to another size will decrease vacuuming efficiency in the sound bore and the receiver nubbin.

CLEANING

Use a lint free cloth with alcohol or ammonia and wipe all parts of this unit.

DO NOT IMMERSE IN LIQUIDS OR APPLY LIQUIDS BY POURING ONTO UNIT.

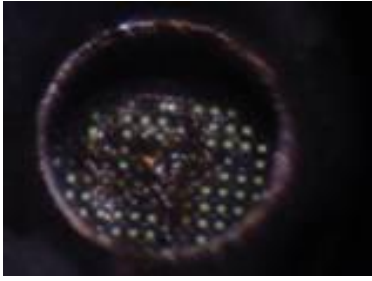
You may spray a light mist and wipe dry or use a damp cloth. Alcohol wipes are convenient.



Contains

- 1- Pink ITE, ITC, CIC, RIC needle,
- 1- Black BTE Ear Mold needle
- 1- Lt. Blue Open Ear Thin Tube needle
- 2- Steel Reamers,

Hearing Aid Tech. Notes



Receiver Screen with some debris
A light is behind the holes
to better show the openings.

Note- A Video Otoscope will not
Amplify adequately to distinguish
a clear hole versus an oil filled
hole
Oil will block sound waves.

Dear Professional,

Hearing Instrument design forces us to use a small needle,
therefore it is important to understand that my needle is highly
efficient and use of other “milled needles” will dramatically reduce
its ability to pull debris through.

When removing Cerumen, remember it comes in many
textures:

Hard and Dry, in all sizes and shapes– Best picked and
vacuumed. Large pieces will sit on end of needle, just flick them
off.

Soft and sticky – Vacuum till clean

Oily- Vacuum till clean, then you may need to add a grease
cutting agent to penetrate the small holes of the damped receiver
screen as shown at left. Then vacuum the screen and repeat two
more times to get all the holes cleared of oil.

Clear Non Sudsing Ammonia is excellent grease cutter. Alcohol
and Hydrogen peroxide are not grease cutting agents.

Microphone/ Receiver do's and don'ts

A mic with a damped screen (like shown above) —it's OK to use Ammonia.

Don't Push on Mic.

A mic that is undamped (you will see no screen)---it's **NOT OK** to use any liquids.

Don't Push on Mic.

A receiver damped ---- it's OK to use Ammonia.

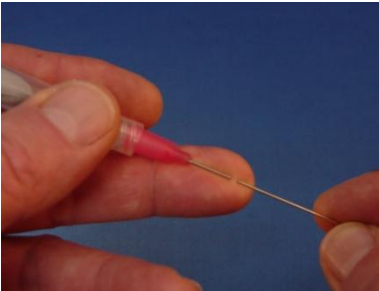
The Transducer Nubbin is slightly smaller than HA Tubing

A receiver undamped - it's OK to use Ammonia.

The Transducer Nubbin is slightly smaller than HA Tubing

Handy tools: Picks, liquid dispenser, 3CC Syringe, #20 Applicator Needle from your supply distributor,
Clear Non Sudsing Household Ammonia- from your grocery store

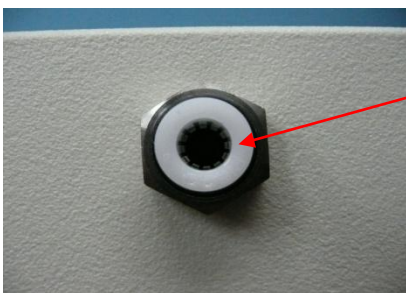
USING REAMER



Create an indent on your finger with needle, place reamer in the indent and
slide into needle.

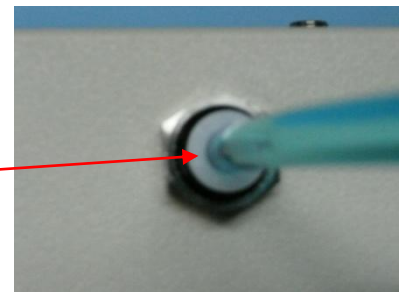
NOTES:

- A plugged needle will cause flow indicator ball NOT to rise.
- A plugged needle will act as a ramrod and push wax deeper.
- Pushing needle in too fast without paying attention will produce undesired results.
- Pushing too hard on Microphone will dislodge Mic. from faceplate
- Old Receiver tubes are prone to coming loose, be gentle.



Insert tubing past the
locking teeth and continue
pushing till tubing bottoms
out.

To Release- push down
white ring and hold while
pulling tubing out



**READ ALL INSTRUCTIONS BEFORE USING
IMPORTANT SAFEGUARDS
THIS PRODUCT IS INTENDED FOR THE CLEANING OF HEARING AID DEVICES AND
NOT TO BE USED TO CLEAN EARS.**

DANGER – to reduce the risk of electric shock:

1. Always unplug this product immediately after using.
2. Do not use while bathing.
3. Do not place or store product where it can fall or be pulled into a tub or sink.
4. Do not place in or drop into water or other liquid.

Warning – To reduce the risk of burns, electrocution, fire or injury to persons:

1. **Do not get the syringe end near eyes or ears, as the needle can puncture skin.**
2. **Do not clean ears with this product.**
3. **If your product comes with a Desiccant, and you are drying it out by use of a heating source---- understand that the desiccant will get very hot and will burn your skin.**
4. **This product is intended to clean hearing aids, any unauthorized use will void any and all warranties.**
5. A product should never be left unattended when plugged in.
6. Close supervision is necessary when this product is used by, on, or near children or invalids.
7. Use this product only for its intended use as described in this manual. Do not use attachments not recommended by the manufacturer.
8. Never operate this product if it has a damaged cord or plug, if it is not working properly, if it has been damaged, dropped into water. Return the product to the manufacturer for examination and repair.
9. Keep the cord away from heated surfaces.
10. Never use while sleepy or drowsy.
11. Do not use where aerosol (spray) products are being used or where oxygen is being administered.

“CAUTION” “RISK OF ELECTRIC SHOCK, DO NOT REMOVE COVER. REFER SERVICING TO QUALIFIED PERSONNEL”

This product is for use on a nominal 12VDC circuit. Use the appropriate AC to DC adapter as supplied with this product when plugging in to household current. This product is factory equipped with a specific electric cord and plug to permit connection to a proper electric circuit. Make sure that the product is connected to an outlet having the same configuration as the plug. Do not modify the plug provided – if it will not fit the outlet, have the proper outlet installed by a qualified electrician. If the product must be reconnected for use on a different type of electrical circuit, the reconnection should be made by qualified service personnel.

WARRANTY

If wax or debris is found inside unit, it will be assumed that vacuuming occurred without the protection of the supplied filter assemblies. Please do not clean filter assemblies. Replacement filters are available. A \$30.00 cleaning charge may be applied.

Manufacturer will repair or replace the product for all defects and workmanship for a period of 3 Years from the date of purchase.

Syringe assembly and needle are excluded from this or any other warranty.

Manufacturer is not responsible for incidental or consequential damages arising from accident, abuse, misuse, or failure to follow instructions for the product. Any alteration of the product voids this warranty.

To activate this warranty, purchaser must show proof of purchase date of the product. If purchased through JodiVac, warranty will be automatically activated.

Purchaser is responsible for shipping and handling costs when returning the product for warranty service.

For warranty service contact: Kat

JodiVac LLC

17912 SE Mill Court

Portland, OR 97233

kat@jodivac.com Voice 503-774-4951 Toll Free 866-856-5634 Fax 503-287-8408