

jodi[®] Press Vac



1. Vacuum/Press On/Off Switch
2. Air Pressure Assembly- **non removable**
3. Vacuum Filter assembly with ball, **please don't clean, they can be filled up and then replaced inexpensively**
4. Inserts for Needle storage

Normal Operation

Vacuum

1. Turn on switch (#1) to Vacuum, use needle vacuum (#3)

The White ball in the filter assembly is an air flow indicator. When air is flowing through the needle past the filter, it pushes the ball towards the tubing on its way to the vacuum pump. If the air stops flowing, the ball drops away from the tubing.

Please clean the needle first as the filter takes a long time to fill up with debris. Clean the needle while the vacuum is running, insert reamer into needle to push lodged wax into filter.

Pressure

1. Turn on switch (#1), and use air pressure assembly (#2)
DO NOT BLOW INTO MICROPHONE OR RECEIVER PORTS!

Helpful Hints

1. Our Pink needle is specifically designed for maximum vacuum efficiency in CIC's, ITC, ITE, and RIC sound bores. The Light Blue needle is sized for open ear Thin Tubes. Our Black needle is oversized for Ear Molds.

Changing this needle to another size will decrease vacuuming efficiency in the sound bore and the receiver nubbin.

2. The air pressure assembly is secured to the blue tubing. Please don't try to remove-- call first. It only blows clean air so no filtration is required.

3. For air pressure, use the three flexible needles. They are wire reinforced so you may use them as a reamer for vent cleaning, size permitting. The pink one is far less rigid than the brown and green needles. **Not for vacuuming as wire will block wax.**

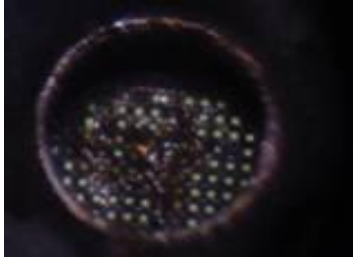


CLEANING

Use a lint free cloth with alcohol or ammonia and wipe all parts of this unit.

DO NOT IMMERSE IN LIQUIDS OR APPLY LIQUIDS BY POURING ONTO UNIT.

You may spray a light mist and wipe dry or use a damp cloth. Alcohol wipes are convenient.



Receiver Screen with some debris
 A light is behind the holes to better show the openings,
 Note- A Video Otoscope will not Amplify adequately to distinguish a clear hole verses an oil filled hole
 Oil will block sound waves.

Hearing Aid Tech. Notes

Dear Professional,

Hearing Instrument design forces us to use a small needle, therefore it is important to understand that my needle is highly efficient and use of other “milled needles” will dramatically reduce its ability to pull debris through.

If you would like to see another size added to this product, please call Kathy at JodiVac.

When removing Cerumen, remember it comes in many textures:

Hard and Dry, in all sizes and shapes– Best picked and vacuumed. Large pieces will sit on end of needle, just flick them off.

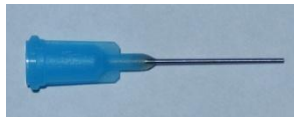
Soft and sticky – Vacuum till clean

Oily- Vacuum till clean, then you may need to add a grease cutting agent to penetrate the small holes of the damped receiver screen as shown below. Then vacuum the screen and repeat two more times to get all the holes cleared of oil.

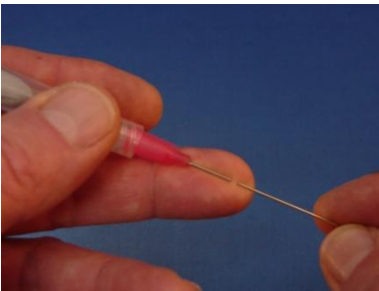
Clear Non Sudsing Ammonia is excellent grease cutter. Alcohol and Hydrogen peroxide are not grease cutting agents.

Contains

1-Spare vacuum filter, 1- Pink ITE, ITC, CIC, RIC needle, 1- Black BTE Ear Mold needle
 1-Lt. Blue Open Ear Thin Tube needle, 2- Steel Reamers, 3- Flexible Air Pressure Needles



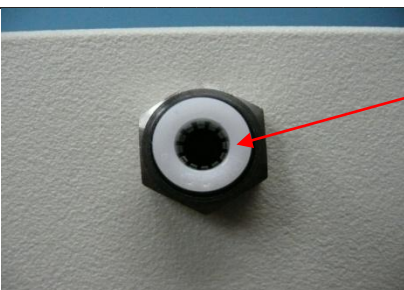
USING REAMER



Create an indent on your finger with needle, place reamer in the indent and slide into needle.

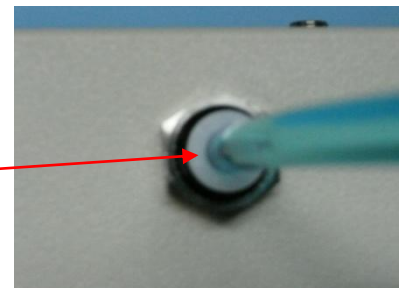
NOTES:

- A plugged needle will cause flow indicator ball NOT to rise.
- A plugged needle will act as a ramrod and push wax deeper.
- Pushing needle in too fast without paying attention will produce undesired results.
- Pushing too hard on Microphone will dislodge Mic. from faceplate
- Old Receiver tubes are prone to coming loose, be gentle.



Insert tubing past the locking teeth and continue pushing till tubing bottoms out.

To Release- push down white ring and hold while pulling tubing out



READ ALL INSTRUCTIONS BEFORE USING”
IMPORTANT SAFEGUARDS
THIS PRODUCT IS INTENDED FOR THE CLEANING OF HEARING AID DEVICES AND
NOT TO BE USED TO CLEAN EARS.

DANGER – to reduce the risk of electric shock:

1. Always unplug this product immediately after using.
2. Do not use while bathing.
3. Do not place or store product where it can fall or be pulled into a tub or sink.
4. Do not place in or drop into water or other liquid.

Warning – To reduce the risk of burns, electrocution, fire or injury to persons:

1. **Do not get the syringe end near eyes or ears, as the needle can puncture skin.**
2. **Do not clean ears with this product.**
3. **If your product comes with a Desiccant, and you are drying it out by use of a heating source---- understand that the desiccant will get very hot and will burn your skin.**
4. **This product is intended to clean hearing aids, any unauthorized use will void any and all warranties.**
5. A product should never be left unattended when plugged in.
6. Close supervision is necessary when this product is used by, on, or near children or invalids.
7. Use this product only for its intended use as described in this manual. Do not use attachments not recommended by the manufacturer.
8. Never operate this product if it has a damaged cord or plug, if it is not working properly, if it has been damaged, dropped into water. Return the product to the manufacturer for examination and repair.
9. Keep the cord away from heated surfaces.
10. Never use while sleepy or drowsy.
11. Do not use where aerosol (spray) products are being used or where oxygen is being administered.

“CAUTION” “RISK OF ELECTRIC SHOCK, DO NOT REMOVE COVER. REFER SERVICING TO QUALIFIED PERSONNEL

This product is for use on a nominal 12VDC circuit. Use the appropriate AC to DC adapter as supplied with this product when plugging in to household current. This product is factory equipped with a specific electric cord and plug to permit connection to a proper electric circuit. Make sure that the product is connected to an outlet having the same configuration as the plug. Do not modify the plug provided – if it will not fit the outlet, have the proper outlet installed by a qualified electrician. If the product must be reconnected for use on a different type of electrical circuit, the reconnection should be made by qualified service personnel.

WARRANTY

If wax or debris is found inside unit, it will be assumed that vacuuming occurred without the protection of the supplied filter assemblies. Please do not clean filter assemblies. Replacement filters are available. A \$30.00 cleaning charge may be applied.

Manufacturer will repair or replace the product for all defects and workmanship for a period of 3 Years from the date of purchase.

Syringe assembly and needle are excluded from this or any other warranty.

Manufacturer is not responsible for incidental or consequential damages arising from accident, abuse, misuse, or failure to follow instructions for the product. Any alteration of the product voids this warranty.

To activate this warranty, purchaser must show proof of purchase date of the product. If purchased through JodiVac, warranty will be automatically activated.

Purchaser is responsible for shipping and handling costs when returning the product for warranty service.

For warranty service contact: Kat

JodiVac LLC

17912 SE Mill Court

Portland, OR 97233

kat@jodivac.com Voice 503-774-4951 Toll Free 866-856-5634 Fax 503-287-8408